

# DRIVELINE COMPONENTS CATALOG

# SPICER®

CENTER YOKES, TUBE YOKES  
AND BALL STUD TUBE YOKES



J300P-5  
JULY 2001

Supersedes  
J300-P5 Dated  
December 1999

**Now Included...  
Spicer Life Series® Tube Yokes!**



CENTER YOKES, TUBE YOKES AND BALL STUD TUBE YOKES



# HOW TO USE THIS CATALOG

This publication contains data on Spicer center yokes and ball stud tube yokes for double cardan driveshafts and Spicer tube yokes for single cardan driveshafts.

## To identify a center yoke:

To identify any center yoke, three pieces of information are required:

- ❶ Determine the Series
- ❷ Determine the center to center dimension of the part
- ❸ The type of part (circular or rectangular)

Example: To find a 1310 Series, rectangular type, center to center dimension (see sample page below)

- ❶ Find the 1310 Series heading.
- ❷ Find the type (a rectangular is a type 1).
- ❸ Find the center to center dimension of the part.

Series and all pertinent series dimensions appear as shown in the sample below:

Series	C		Swing Diameter	Joint Angle	Type	Center Yoke Part Number
	Center to Center					
<b>1310 SERIES</b>	<b>E-3.469</b>	<b>D-1.062</b>	<b>USE KIT 5-153X, 5-200X, 5-625X &amp; 5-626X</b>			
	2.6880	3.8750	26.0	2	2-26-477	
	2.6880	3.8750	26.0	2	2-26-497	
	2.6880	3.8750	26.0	2	2-26-507	

## To identify a tube yoke:

To identify any tube yoke, three pieces of information are required:

- ❶ Determine the Series.
- ❷ Determine the size and wall thickness of the tube it fits.
- ❸ Determine the dimension from center of joint to weld point.

Example: To find a 1330 Series tube yoke with a 2.120 center to weld dimension that fits a 2.000 O.D. tube with a .120 wall (see sample page below)

- ❶ Find the 1330 Series heading.
- ❷ Find the O.D. of the tube it fits.
- ❸ Find the wall thickness of the tube it fits.
- ❹ Find the center of joint to weld point dimension of the part.

Series and all pertinent series dimensions appear as shown in the sample below:

Series	For Use With Tubing Diameter & Wall	F	H	Angle	Used in Tube Yoke & Tube Assembly	Tube Yoke Part Number
		Butt Diameter	Centerline to Point of Weld			
<b>1310 SERIES</b>	<b>E-3.469</b>	<b>D-1.062</b>	<b>USE KIT 5-153X &amp; 5-200X</b>			
	1.2500 x .0980W	1.0600	2.1200	—	—	2-26-187
	1.2500 x .1200S	1.0000	2.1250	30.0	—	2-26-347
	1.2500 x .1880S	.8750	2.2810	23.0	—	2-26-147



# HOW TO USE THIS CATALOG

## To identify a ball stud tube yoke:

To identify any center yoke, three pieces of information are required:

- ❶ Determine the Series
- ❷ Determine the size and wall thickness of the tube it fits.
- ❸ Determine the dimension from center of joint to weld point.
- ❹ Determine the center of joint to end of ball stud dimension.
- ❺ Determine the diameter of the ball stud.
- ❻ Determine the length of the ball stud.
- ❼ Determine the configuration and dimensions for the slinger or seal (if the part has a slinger or seal).

Example: To find a 1310 Series ball stud tube yoke with a 1.438 center to weld dimension that fits a 2.000 O.D. tube with a .120 wall and a .500 dia. stud (see sample page below)

- ❶ Find the 1310 Series heading.
- ❷ Find the O.D. of the tube it fits.
- ❸ Find the wall thickness of the tube it fits. These three items should get you to within one or two possibilities.
- ❹ Find the center of joint to weld point dimension of the part.
- ❺ Match the appropriate stud dimensions to the stud dimensions under your Series header and to zero in on your part. The only difference between parts with similar dimensions should be the slinger or seal included with the tube yoke.
- ❻ Measure the slinger O.D. and width; compare them to the dimension sheet on page 12 and determine the slinger part number. There is only one seal and it is part number 2-86-419.
- ❼ Locate the ball stud tube yoke part assembly number that uses your slinger or seal.

Series and all pertinent series dimensions appear as shown in the sample below:

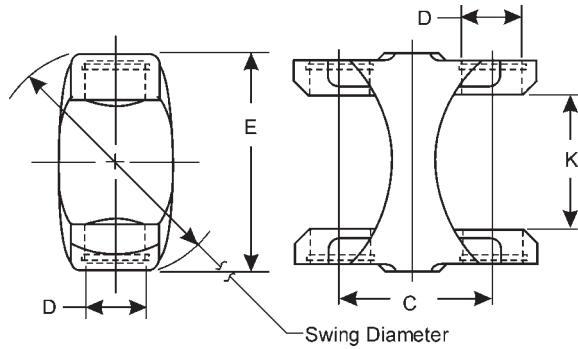
Series	For Use With Tubing Diameter & Wall	F	K	J	Ball Stud		Angle	Slinger	Ball Stud Tube Yoke Assembly Part Number
		Butt Diameter	Centerline to Point of Weld	Centerline to End of Ball Stud	L	H			
					Length	Diameter			
<b>1310</b>	<b>SERIES E-3.469</b>	<b>D-1.062</b>			<b>USE KIT 5-153X &amp; 5-200X</b>				
	1.2500X.1200 W	1.0160	1.5000	1.6410	.5940	.5000	—	2-86-418	2-28-2807X
	1.2500X.1200 W	1.0160	1.5000	1.6410	.5940	.5000	13.0	231864	2-28-2997X
	1.7500X.0950 W	1.5620	1.4380	1.6410	.5940	.5000	—	2-86-418	2-28-2827X

**IMPORTANT NOTICE:** The data listed herein is correct to the best of our knowledge and belief; having been compiled from reliable and official sources of information. However, WE CANNOT ASSUME ANY RESPONSIBILITY for possible error.

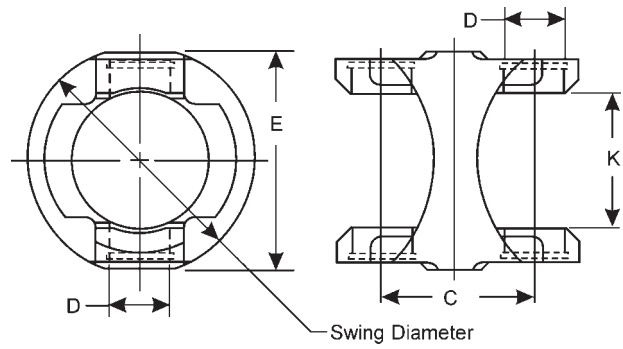


# CENTER YOKES

## Outside Snap Ring Design



**Type 1**



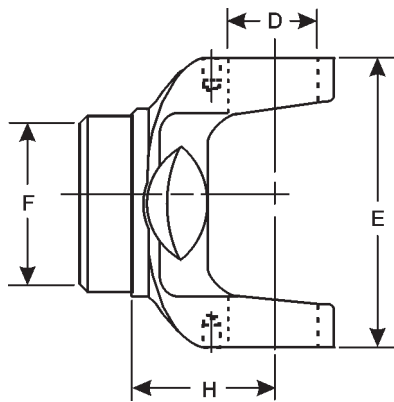
**Type 2**

Series	C		Swing Diameter	Joint Angle	Type	Center Yoke Part Number
	Center to Center					
<b>1000 SERIES K-1.500 D-938</b>						<b>USE KIT 5-170X</b>
	2.1250		2.5000	—	2	10-26-47
<b>1210 SERIES E-2.688 D-1.062</b>						<b>USE KIT 5-443X</b>
	2.6880		3.3750	21.0	2	2-26-457
<b>1310 SERIES E-3.469 D-1.062</b>						<b>USE KIT 5-153X &amp; 5-200X</b>
	2.6880		3.8750	26.0	2	2-26-477
	2.6880		3.8750	26.0	2	2-26-497
	2.6880		3.8750	26.0	2	2-26-507
	2.7500		3.8750	18.0	1	2-26-177
	3.0000		3.8750	33.0	1	2-26-257
<b>1330 SERIES SR STYLE E-3.875</b>						<b>USE KIT 5-213X</b>
	2.7500		4.1250	18.0	2	2-26-527
<b>1350 SERIES E-3.875 D-1.188</b>						<b>USE KIT 5-178X, 5-627X &amp; 5-617X</b>
	2.1200		—	—	2	3-26-577
	2.7500		4.2500	—	1	3-26-317
	2.8750		4.6820	26.0	2	3-26-757
<b>1410 SERIES E-4.438 D-1.188</b>						<b>USE KIT 5-160X, 5-641X &amp; 5-722X</b>
	3.3750		4.6880	—	1	3-26-747
<b>1480 SERIES E-4.438 D-1.375</b>						<b>USE KIT 5-188X</b>
	3.3750		3.8750	26.0	1	3-26-667
	4.2400		3.8750	26.0	1	3-26-677
<b>1550 SERIES E-5.250 D-1.375</b>						<b>USE KIT 5-155X</b>
	3.9380		4.1250	—	1	4-26-437

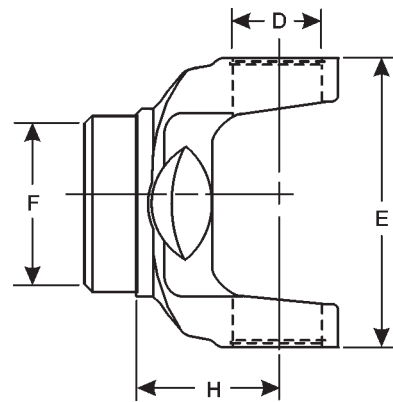


# TUBE YOKES

## Spicer Life Series™



**Spring Tab Design**



**Snap Ring Design**

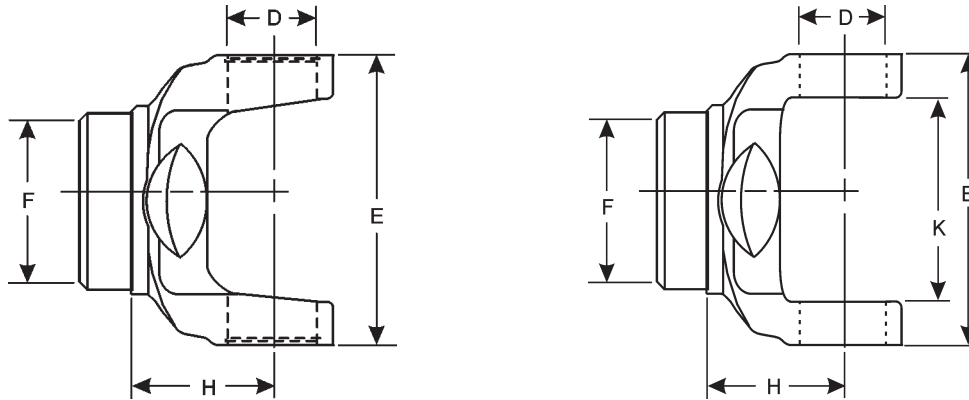
Series	For Use With Tubing Diameter & Wall	F	H	Angle	Used in Tube Yoke & Tube Assembly	Tube Yoke Part Number
		Butt Diameter	Centerline to Point of Weld			
<b>SPL100 SERIES</b>	<b>E-5.375 D-1.625</b>				<b>USE KIT NO. SPL100-1X</b>	
	4.0000 x .0950W	3.8100	2.9690	—	—	100-28-17
<b>SPL140 SERIES</b>	<b>E-5.028 IN., D-1.936</b>				<b>USE KIT NO SSPL140-1X</b>	
	4.3310 x .1970W	3.9370	4.4880	—	—	140-28-17
	4.5670 x .1570W	4.2530	3.5000	—	—	140-28-27
<b>SPL170 SERIES</b>	<b>E-153MM (6.024 IN.) D-55 M (2.166 IN.)</b>				<b>USE KIT NO. SPL170X</b>	
	4.7240 x .1970W	4.3500	4.7240	—	—	170-28-27
	4.7240 x .1970W	4.3500	4.7240	—	—	170-28-37
	5.1180 x .1970W	4.7500	3.7000	—	—	<i>Used only in short couple shafts</i> 170-28-17
<b>SPL250 SERIES</b>	<b>E- 152 MM (5.984 IN.) D- 60 MM (2.362 IN.)</b>				<b>USE KIT NO. SPL250X</b>	
	5.1670 x .2360W	4.7240	4.0940	—	—	250-28-17
<b>SPL90 SERIES</b>	<b>E-5.375 D-1.625</b>				<b>USE KIT SPL90X</b>	
	4.0000 x .0950W	3.8120	2.9690	—	—	90-28-17
	4.0000 x .1340W	3.7340	2.9690	—	—	90-28-27



**Important:** See Safety Information in General Information Section (J300P-GI)

# TUBE YOKES

## Snap Ring Design

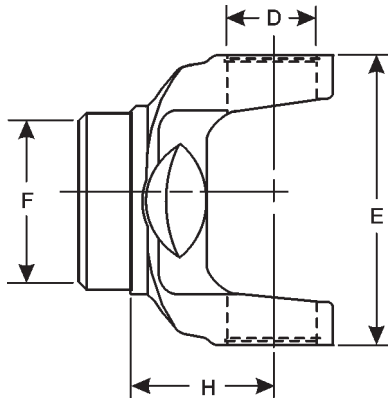


Series	For Use With Tubing Diameter & Wall	F	H	Angle	Used in Tube Yoke & Tube Assembly	Tube Yoke Part Number
		Butt Diameter	Centerline to Point of Weld			
<b>1000</b>	<b>SERIES K-1.500 D-.938</b>					<b>USE KIT 5-170X</b>
	1.2500 x .0950W	1.0700	2.5600	60.0	—	10-26-37
	1.7500 x .0650W	1.6250	2.0000	—	—	10-28-97
	1.7500 x .0650W	1.6250	2.0000	60.0	10-27-1	10-28-17
<b>1100</b>	<b>SERIES E-2.656 D-.938</b>					<b>USE KIT 5-101X OR 5-111X</b>
	1.2500 x .0950W	1.0620	1.6870	—	—	1-26-297
	2.0000 x .0650W	1.8750	1.5000	20.0	—	1-28-107



# TUBE YOKES

## Outside Snap Ring Design



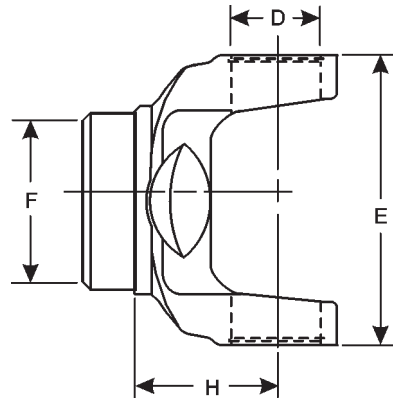
Series	For Use With Tubing Diameter & Wall	F	H	Angle	Used in Tube Yoke & Tube Assembly	Tube Yoke Part Number
		Butt Diameter	Centerline to Point of Weld			
<b>1210</b>	<b>SERIES E-2.688 D-1.062</b>					<b>USE KIT 5-443X</b>
	1.5000 x .1200W	1.2500	1.6250	—	—	2-28-3027
	2.0000 x .0830W	1.8440	1.5000	20.0	—	2-28-2417
	2.5000 x .0650W	2.3750	1.3120	20.0	—	2-28-1947
<b>1310</b>	<b>SERIES E-3.469 D-1.062</b>					<b>USE KIT 5-153X &amp; 5-200X</b>
	1.2500 x .0980W	1.0600	2.1200	—	—	2-26-187
	1.2500 x .1200S	1.0000	2.1250	30.0	—	2-26-347
	1.2500 x .1880S	.8750	2.2810	23.0	—	2-26-147
	1.7500 x .0650W	1.6250	1.6880	22.0	—	2-28-447
	1.7500 x .0950W	1.6250	1.6880	22.0	—	2-28-3187
	2.0000 x .0650W	1.8750	1.6880	22.0	—	2-28-417
	2.0000 x .0830W	1.8440	1.6900	—	2-27-7	2-28-357
	2.0000 x .0950W	1.8120	1.6880	22.0	—	2-28-577
	2.0000 x .1200W	1.7660	1.6880	22.0	—	2-28-1757
	2.2500 x .0950W	2.0620	1.9380	30.0	—	2-28-547
	2.5000 x .0640W	2.3750	1.8440	30.0	—	2-28-3167
	2.5000 x .0650W	2.3750	1.8440	30.0	2-27-4	2-28-277
	2.5000 x .0830W	2.3440	1.8440	30.0	2-27-9	2-28-367
	2.7500 x .0650W	2.6250	1.6880	21.5	2-27-5	2-28-307
	2.7500 x .0830S	2.5940	1.8910	—	—	2-28-1507
	2.7500 x .0830W	2.5940	1.6880	21.5	—	2-28-1617
	2.7500 x .1200S	2.5310	1.3750	—	—	2-28-2787
						<i>Material: aluminum</i>
	3.0000 x .0650W	2.8750	1.6880	18.0	2-27-6	2-28-327
	3.0000 x .0650W	2.8750	2.3440	—	—	2-28-3207
	3.0000 x .0830W	2.8440	1.6880	—	2-27-24	2-28-437
	3.0000 x .1200W	2.7660	1.3750	—	—	2-28-2427
						<i>Material: aluminum</i>
	3.0000 x .1200W	2.7660	1.5000	—	—	2-28-3017
						<i>Material: aluminum</i>
	3.2500 x .0650W	3.1250	1.6880	21.5	—	2-28-557
	3.2500 x .0830S	3.0940	1.9690	—	—	2-28-3367
						<i>Material: aluminum</i>
	3.5000 x .0650W	3.3750	1.6880	21.5	2-27-10	2-28-397
	3.5000 x .0830W	3.3440	1.6880	—	2-27-12	2-28-427
	4.0000 x .0830W	3.8440	1.5000	—	—	2-28-477
	4.0000 x .0830W	3.8440	1.9100	—	—	2-28-3837
	4.0000 x .0830W	3.8340	2.1300	—	—	2-28-3697
						<i>Material: aluminum</i>



**Important:** See Safety Information in General Information Section (J300P-GI)

# TUBE YOKES

## Outside Snap Ring Design



Series	For Use With Tubing Diameter & Wall	F	H	Angle	Used in Tube Yoke & Tube Assembly	Tube Yoke Part Number
		Butt Diameter	Centerline to Point of Weld			
<b>1330</b>	<b>SERIES SR STYLE E-3.875</b>					<b>USE KIT 5-213X</b>
	2.0000 x .1200W	1.7660	2.1200	—	—	2-28-2777
	2.5000 x .0830W	2.3440	1.7190	25.0	—	2-28-1707
	2.5000 x .0830W	2.3440	2.5370	25.0	—	2-28-3347
	3.0000 x .0650W	2.8750	1.7190	25.0	—	2-28-1177
	3.0000 x .0830W	1.9440	1.7190	25.0	—	2-28-1697
	3.5000 x .0650W	3.1250	1.8120	—	—	2-28-1977
	3.5000 x .0830W	3.3440	1.8120	20.0	—	2-28-1717
	3.7500 x .0830W	3.5840	2.7600	—	—	2-28-3717
						<i>Material: aluminum</i>
	4.0000 x .0650W	3.8700	1.6900	—	—	2-28-3787
	4.0000 x .0850W	3.8440	2.5000	—	—	2-28-3567
						<i>Material: aluminum</i>
	4.0000 x .0830W	3.8530	2.1250	—	—	2-28-3317
						<i>alum yoke-use plug no. 232639 in vent hole</i>
	4.0000 x .0830W	3.8530	2.1300	—	—	2-28-3377
						<i>Material: aluminum</i>
	4.0000 x .0830W	3.8340	2.1300	—	—	2-28-3637
						<i>Material: aluminum</i>
	4.0000 x .0830W	3.8440	2.4060	15.0	—	2-28-3327
						<i>Material: aluminum</i>
	4.1600 x .0830W	3.8530	2.1300	—	—	2-28-3687
						<i>Material: aluminum</i>
	4.1600 x .0870W	3.9800	2.4060	—	—	2-28-3517
						<i>Material: aluminum</i>
	4.5000 x .0830W	4.3440	2.1250	15.0	—	2-28-3307
						<i>Material: aluminum</i>
	4.5200 x .0750W	4.3750	2.2200	17.0	—	2-28-3507
						<i>alum yoke-use plug no. 232639 in vent hole</i>
	5.0000 x .0630W	4.8880	4.1100	—	—	2-28-3527
						<i>Material: aluminum</i>
	5.0000 x .0650W	4.8750	1.8200	—	—	2-28-3487
						<i>Material: aluminum</i>





# TUBE YOKES

## Outside Snap Ring Design

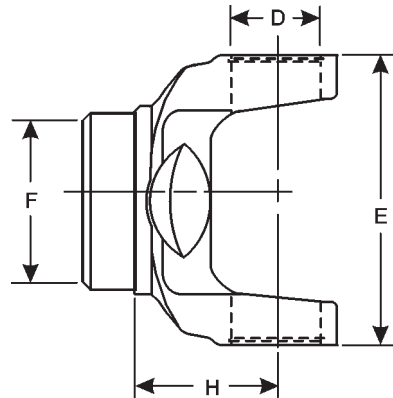


Series	For Use With Tubing Diameter & Wall	F	H	Angle	Used in Tube Yoke & Tube Assembly	Tube Yoke Part Number
		Butt Diameter	Centerline to Point of Weld			
<b>1350</b>	<b>SERIES E-3.875 D-1.188</b>	<b>USE KIT 5-178X, 5-627X &amp; 5-617X</b>				
	2.0000 x .1200W	1.7660	2.1250	30.0	—	3-28-777
	2.5000 x .0830W	2.3440	1.9380	20.0	3-27-1	3-28-47
	2.7500 x .0650W	2.6250	2.0310	20.0	—	3-28-1107
	3.0000 x .0830W	2.8440	2.0000	20.0	3-27-2	3-28-57
	3.0000 x .0830W	2.8440	2.0310	20.0	—	3-28-1157
	3.0000 x .0950W	2.8120	2.0000	—	—	3-28-157
	3.0000 x .1340W	2.7340	1.9700	—	—	3-28-1137
	3.5000 x .0650W	3.3750	1.8120	20.0	3-27-5	3-28-257
	3.5000 x .0830W	3.3440	1.8140	20.0	—	3-28-427
	3.5000 x .1200W	3.2700	1.8370	—	—	3-28-977
						<i>Material: aluminum</i>
	3.5000 x .1560W	3.1880	1.8370	—	—	3-28-1197
	4.0000 x .0830W	3.8440	1.6880	21.0	—	3-28-417
	4.0000 x .0830W	3.8530	2.1300	—	—	3-28-1297
						<i>Material: aluminum</i>
	4.0000 x .0830W	4.8440	2.4060	—	—	3-28-1437
						<i>Material: aluminum</i>
	4.0000 x .0830W	3.8440	2.4100	—	—	3-28-1307
						<i>Material: aluminum</i>
	4.1600 x .0830W	3.8530	2.1300	—	—	3-28-1617
						<i>Material: aluminum</i>
	5.0000 x .0630W	4.8880	4.1100	—	—	3-28-1447
						<i>Material: aluminum</i>
	5.0000 x .0650W	4.8750	1.8440	—	—	3-28-1347
						<i>Material: aluminum</i>
<b>1410</b>	<b>SERIES E-4.438 D-1.188</b>	<b>USE KIT 5-160X, 5-641X &amp; 5-722X</b>				
	2.5000 x .0950W	2.3120	2.0000	—	—	3-28-327
	2.5000 x .1560S	2.1880	2.0000	—	—	3-26-437
	2.7500 x .0830W	2.5940	1.6250	—	—	3-28-987
	3.0000 x .0830W	2.8440	1.6250	8.0	—	3-28-447
	3.0000 x .0830W	2.8440	2.1250	30.0	3-27-3	3-28-97
	3.0000 x .0950W	2.8120	2.1250	30.0	3-27-6	3-28-267
	3.0000 x .2500W	2.5000	1.6250	—	—	3-28-1117
	3.5000 x .0650W	3.3750	2.1250	30.0	3-27-8	3-28-367
	3.5000 x .0830W	3.3440	2.1250	30.0	3-27-4	3-28-557
	4.0000 x .0650W	3.8700	2.5000	30.0	—	3-28-1267
	4.0000 x .0830W	3.8440	1.8750	22.0	3-27-16	3-28-457
	4.0000 x .0830W	3.8530	2.2900	—	—	3-28-1607
						<i>Material: aluminum</i>
	4.0000 x .0830W	3.8530	2.2900	—	—	3-28-1637
						<i>Material: aluminum</i>
	4.0000 x .0950W	3.8120	1.8750	—	—	3-28-387
	4.0000 x .1030W	3.8120	2.1250	—	—	3-28-1537
						<i>Material: aluminum</i>
	4.5000 x .0980W	4.3120	2.1250	—	—	3-28-1387
						<i>Material: aluminum</i>
	4.5100 x .0630W	4.3840	2.2900	—	—	3-28-1547
						<i>alum yoke-use plug no. 232639 in vent hole</i>
	4.5100 x .0630W	4.3840	2.2900	—	—	3-28-1597
						<i>Material: aluminum</i>
	5.0000 x .0630W	4.8750	2.2810	—	—	3-28-1647
						<i>Material: aluminum</i>
	5.0000 x .0630W	4.8880	4.1090	—	—	3-28-1657
						<i>Material: aluminum</i>



# TUBE YOKES

## Outside Snap Ring Design

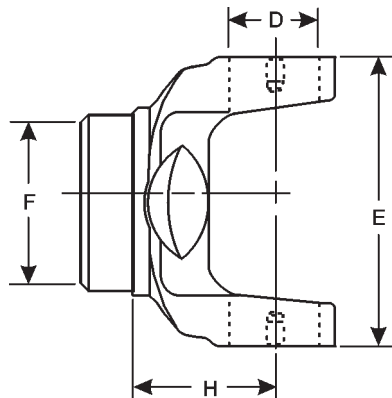


Series	For Use With Tubing Diameter & Wall	F	H	Angle	Used in Tube Yoke & Tube Assembly	Tube Yoke Part Number
		Butt Diameter	Centerline to Point of Weld			
<b>1480</b>	<b>SERIES E-4.438 D-1.375</b>					<b>USE KIT 5-188X</b>
	3.0000 x .0950W	2.8120	1.6880	8.0	—	3-28-497
	3.5000 x .0830W	3.3440	2.0310	22.0	3-27-22	3-28-537
	3.5000 x .0830W	3.3440	2.3120	35.0	—	3-28-547
	3.5000 x .0950W	3.3120	2.0310	22.0	—	3-28-567
	4.0000 x .0830W	3.8440	2.0310	22.5	3-27-20	3-28-507
	4.0000 x .0950W	3.8120	2.0310	22.5	—	3-28-627
<b>1550</b>	<b>SERIES E-5.250 D-1.375</b>					<b>USE KIT 5-155X</b>
	2.4100 x .0950W	2.2190	1.8440	8.0	—	4-28-257
	3.5000 x .0950W	3.3120	2.1880	22.5	4-27-18	4-28-307
	3.5000 x .0950W	3.3120	2.6880	35.0	4-27-16	4-28-417
	3.5000 x .1340W	3.2500	1.8100	—	—	4-28-627
	3.5000 x .1340W	3.2500	2.1880	22.5	—	4-28-487
	3.5000 x .1560W	3.1880	2.1880	—	—	4-28-657
	4.0000 x .0830W	3.8440	2.1880	22.5	—	4-28-277
	4.0000 x .0950W	3.8120	2.1880	22.5	—	4-28-297



# TUBE YOKES

## Bearing Plate Design



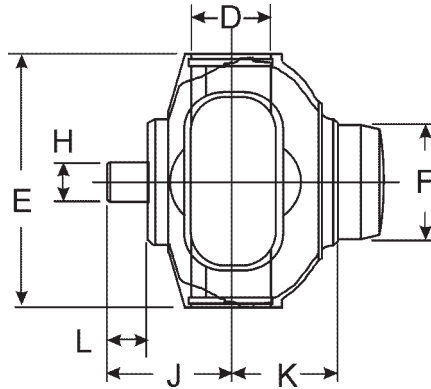
Series	For Use With Tubing Diameter & Wall	F	H	Angle	Used in Tube Yoke & Tube Assembly	Tube Yoke Part Number
		Butt Diameter	Centerline to Point of Weld			
<b>1610</b>	<b>SERIES E-5.312 D-1.875</b>				<b>USE KIT 5-279X, 5-674X</b>	
	3.5000 x .0950W	3.3120	3.0000	35.0	5-27-7	5-28-167
	3.5000 x .1340W	3.2500	3.0000	35.0	5-27-25	5-28-627
	3.5000 x .1340W	3.2500	3.0010	35.0	—	5-28-717
	3.5000 x .1340W	3.2500	3.8100	—	—	5-28-887
	3.5000 x .1550W	3.1880	3.0000	—	—	5-28-957
	3.5000 x .1560W	3.1880	3.0000	35.0	5-27-9	5-28-207
	3.5500 x .2070W	3.1410	2.2190	—	—	5-28-977M
	3.5500 x .2070W	3.1410	2.2200	—	—	5-28-837
	4.0000 x .1340W	3.7340	3.0000	—	—	5-28-327
<b>1710</b>	<b>SERIES E-6.094 (6.190 FOR HR STYLE) D-1.938</b>				<b>USE KIT 5-280X, 5-675X</b>	
	3.5000 x .1560W	3.1880	3.0310	22.0	6-27-7	6-28-137
	4.0000 x .1340W	3.7340	3.0310	30.0	6-27-17	6-28-347
	4.0000 x .1340W	3.7340	3.6880	45.0	—	6-28-467
	4.0000 x .1340W	3.7340	4.0600	—	—	6-28-527
	4.5000 x .1340W	4.2340	3.0310	22.0	—	6-28-407
<b>1760</b>	<b>SERIES E-7.000 (7.094 FOR HR STYLE) D-1.938</b>				<b>USE KIT 5-407X, 5-677X</b>	
	4.0900 x .1800W	3.7340	3.0310	30.0	—	6.3-28-17
<b>1810</b>	<b>SERIES E-7.547 (7.643 FOR HR STYLE) D-1.938</b>				<b>USE KIT 5-281X, 5-676X</b>	
	3.5500 x .2070W	3.1410	3.3750	30.0	—	6.5-28-137
	4.5000 x .1340W	4.2340	3.3750	30.0	6.5-27-9	6.5-28-117
	4.5000 x .2590W	3.9840	3.3750	30.0	—	6.5-28-127
<b>1880</b>	<b>SERIES E-8.094 D-2.188</b>				<b>USE KIT 5-308X</b>	
	4.5000 x .2590W	3.9840	4.0000	22.5	—	8-28-147
<b>1950</b>	<b>SERIES E-10.094 D-3.062</b>				<b>USE KIT 5-192X</b>	
	6.0000 x .5000S	5.1250	6.5310	20.0	—	9-26-18X



Important: See Safety Information in General Information Section (J300P-GI)

# BALL STUD TUBE YOKES

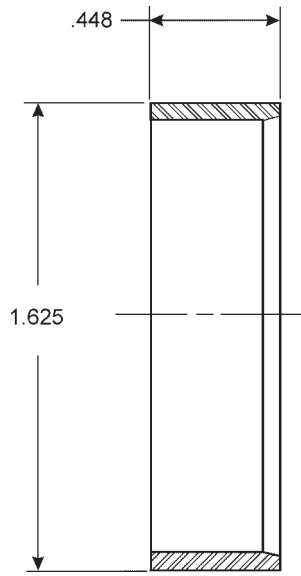
## For Constant Velocity Applications



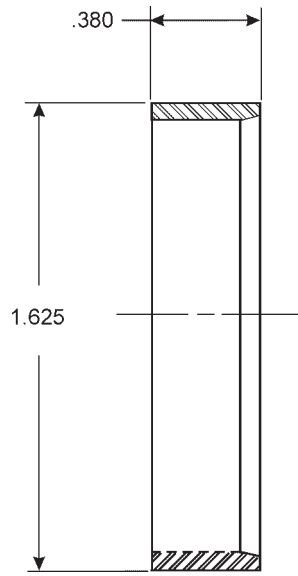
Series	For Use With Tubing Diameter & Wall	F Butt Diameter	K Cntrline to Point of Weld	J Cntrline to End of Ball Stud	Ball Stud		Angle	Slinger	Ball Stud Tube Yoke Assembly Part Number
					L Length	H Diameter			
<b>1210</b>	<b>SERIES E-2.688</b>	<b>D-1.062</b>							<b>USE KIT 5-443X</b>
	2.0000X.0830 W	1.8440	1.3120	1.6410	.5940	.5000	10.5	231413	2-28-2717X
	2.0000X.1200 W	1.7660	1.3120	1.6410	.5940	.5000	10.5	231413	2-28-2467X
	2.5000X.0650 W	2.3750	1.3120	1.6410	.5940	.5000	10.5	231413	2-28-2407X
<b>1310</b>	<b>SERIES E-3.469</b>	<b>D-1.062</b>							<b>USE KIT 5-153X &amp; 5-200X</b>
	1.2500X.1200 W	1.0160	1.5000	1.6410	.5940	.5000	—	2-86-418	2-28-2807X
	1.2500X.1200 W	1.0160	1.5000	1.6410	.5940	.5000	13.0	231864	2-28-2997X
	1.7500X.0950 W	1.5620	1.4380	1.6410	.5940	.5000	—	2-86-418	2-28-2827X
	1.7500X.0950 W	1.5620	1.4380	1.6410	.5940	.5000	—	231864	2-28-2937X
	2.0000X.1200 W	1.7660	1.4380	1.6410	.5940	.5000	—	2-86-418	2-28-2867X
	2.0000X.1200 W	1.7660	1.4380	1.6410	.5940	.5000	13.0	231864	2-28-2947X
	2.5000X.0650 W	2.3750	1.4380	1.6410	.5940	.5000	—	2-86-418	2-28-3087X
	2.5000X.0830 W	2.3440	1.4380	1.6410	.5940	.5000	—	2-86-418	2-28-2887X
	2.5000X.0830 W	2.3440	1.4380	1.6410	.5940	.5000	13.0	231864	2-28-2957X
	2.7500X.0650 W	2.6250	1.2810	1.6410	.5940	.5000	13.0	2-86-418	2-28-2747X
	2.7500X.0650 W	2.6250	1.2810	1.6410	.5940	.5000	13.0	231864	2-28-2987X
	2.7500X.0830 W	2.5840	1.4400	1.6410	.5940	.5000	—	231864	2-28-3817X
	3.0000X.0650 W	2.8750	1.4380	1.6410	.5940	.5000	—	2-86-418	2-28-2907X
	3.0000X.0650 W	2.8750	1.4380	1.6410	.5940	.5000	13.0	231864	2-28-2967X
	3.0000X.0830 W	2.8440	1.4380	1.6410	.5940	.5000	—	2-86-418	2-28-2927X
	3.0000X.0830 W	2.8440	1.4380	1.6410	.5940	.5000	13.0	231864	2-28-2977X
<b>1330</b>	<b>SERIES SR STYLE E-3.875</b>								<b>USE KIT 5-213X</b>
	2.0000X.1200 W	1.7660	1.3750	1.6560	.5940	.5000	13.0	231259	2-28-2157X
	2.0000X.1200 W	1.7660	1.3750	1.6720	.5940	.5000	—	2-86-418	2-28-3257X
	2.5000X.0830 W	2.3340	1.3500	1.6400	.5940	.5000	—	231413	2-28-3657X
	2.5000X.0830 W	2.3440	1.3750	1.6560	.5940	.5000	13.0	231259	2-28-2137X
	2.5000X.0830 W	2.3440	1.3750	1.6720	.5940	.5000	—	2-86-418	2-28-3067X
	2.5000X.0950 W	2.3120	1.3750	1.6720	.5940	.5000	—	2-86-418	2-28-3277X
	3.0000X.0650 W	2.8750	1.3750	1.7500	.6880	.6090	—	230962	2-28-1277X
	3.0000X.0650 W	2.8750	1.4380	1.6700	.4220	.5000	13.0	231259	2-28-2117X
	3.0000X.0830 W	2.8440	1.3750	1.6720	.5940	.5000	—	2-86-418	2-28-3447X
	3.0000X.0830 W	2.8440	1.4380	1.6720	.5940	.5160	13.0	231259	2-28-2187X
<b>1350</b>	<b>SERIES E-3.875</b>	<b>D-1.188</b>							<b>USE KIT 5-178X, 5-627X &amp; 5-617X</b>
	3.0000X.0830 W	2.8440	1.4380	1.7340	.5940	.5000	13.0	2-86-418	3-28-1327X
	3.5000X.0830 W	3.3440	1.4380	1.7340	.5940	.5000	—	2-86-418	3-28-1527X



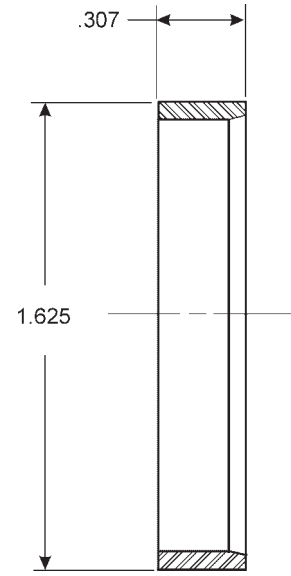
# SLINGER STYLES



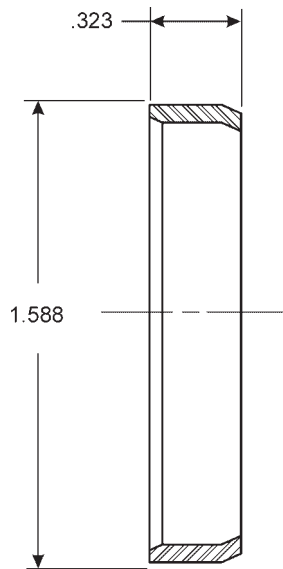
**230962**



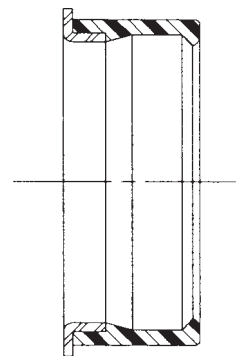
**231259**



**231413**



**231864**



**2-86-418**





100-28-17 ..... 5	2-28-3187 ..... 7	3-26-757 ..... 4
10-26-37 ..... 6	2-28-3207 ..... 7	3-28-1107 ..... 9
10-26-47 ..... 4	2-28-327 ..... 7	3-28-1117 ..... 9
10-28-17 ..... 6	2-28-3307 ..... 8	3-28-1137 ..... 9
10-28-97 ..... 6	2-28-3317 ..... 8	3-28-1157 ..... 9
1-26-297 ..... 6	2-28-3327 ..... 8	3-28-1197 ..... 9
1-28-107 ..... 6	2-28-3347 ..... 8	3-28-1267 ..... 9
140-28-17 ..... 5	2-28-3367 ..... 7	3-28-1297 ..... 9
140-28-27 ..... 5	2-28-3377 ..... 8	3-28-1307 ..... 9
170-28-17 ..... 5	2-28-3487 ..... 8	3-28-1347 ..... 9
170-28-27 ..... 5	2-28-3507 ..... 8	3-28-1387 ..... 9
170-28-37 ..... 5	2-28-3517 ..... 8	3-28-1437 ..... 9
2-26-147 ..... 7	2-28-3527 ..... 8	3-28-1447 ..... 9
2-26-177 ..... 4	2-28-3567 ..... 8	3-28-1537 ..... 9
2-26-187 ..... 7	2-28-357 ..... 7	3-28-1547 ..... 9
2-26-257 ..... 4	2-28-3637 ..... 8	3-28-157 ..... 9
2-26-347 ..... 7	2-28-367 ..... 7	3-28-1597 ..... 9
2-26-457 ..... 4	2-28-3687 ..... 8	3-28-1607 ..... 9
2-26-477 ..... 4	2-28-3697 ..... 7	3-28-1617 ..... 9
2-26-497 ..... 4	2-28-3717 ..... 8	3-28-1637 ..... 9
2-26-507 ..... 4	2-28-3787 ..... 8	3-28-1647 ..... 9
2-26-527 ..... 4	2-28-3837 ..... 7	3-28-1657 ..... 9
2-28-1177 ..... 8	2-28-3837 ..... 8	3-28-257 ..... 9
2-28-1507 ..... 7	2-28-397 ..... 7	3-28-267 ..... 9
2-28-1617 ..... 7	2-28-417 ..... 7	3-28-327 ..... 9
2-28-1697 ..... 8	2-28-427 ..... 7	3-28-367 ..... 9
2-28-1707 ..... 8	2-28-437 ..... 7	3-28-387 ..... 9
2-28-1717 ..... 8	2-28-447 ..... 7	3-28-417 ..... 9
2-28-1757 ..... 7	2-28-477 ..... 7	3-28-427 ..... 9
2-28-1947 ..... 7	2-28-547 ..... 7	3-28-447 ..... 9
2-28-1977 ..... 8	2-28-557 ..... 7	3-28-457 ..... 9
2-28-2417 ..... 7	2-28-577 ..... 7	3-28-47 ..... 9
2-28-2427 ..... 7	250-28-17 ..... 5	3-28-497 ..... 10
2-28-277 ..... 7	3-26-117 ..... 9	3-28-507 ..... 10
2-28-2777 ..... 8	3-26-317 ..... 4	3-28-537 ..... 10
2-28-2787 ..... 7	3-26-437 ..... 9	3-28-547 ..... 10
2-28-3017 ..... 7	3-26-577 ..... 4	3-28-557 ..... 9
2-28-3027 ..... 7	3-26-667 ..... 4	3-28-567 ..... 10
2-28-307 ..... 7	3-26-677 ..... 4	3-28-57 ..... 9
2-28-3167 ..... 7	3-26-747 ..... 4	3-28-627 ..... 10



3-28-777 .....	9
3-28-97 .....	9
3-28-977 .....	9
3-28-987 .....	9
4-26-437 .....	4
4-28-257 .....	10
4-28-277 .....	10
4-28-297 .....	10
4-28-307 .....	10
4-28-417 .....	10
4-28-487 .....	10
4-28-627 .....	10
4-28-657 .....	10
5-28-167 .....	11
5-28-207 .....	11
5-28-327 .....	11
5-28-627 .....	11
5-28-717 .....	11
5-28-837 .....	11
5-28-887 .....	11
5-28-957 .....	11
5-28-977M .....	11
6.3-28-17 .....	11
6.5-28-117 .....	11
6.5-28-127 .....	11
6.5-28-137 .....	11
6-28-137 .....	11
6-28-347 .....	11
6-28-407 .....	11
6-28-467 .....	11
6-28-527 .....	11
8-28-147 .....	11
90-28-17 .....	5
90-28-27 .....	5
9-26-18X.....	11



**SPICER<sup>®</sup>**



Commercial Vehicle Service Parts  
Dana Corporation  
P.O. Box 321  
Toledo, OH 43697  
Phone:419-866-3900  
Fax:419-866-3925

[www.dana.com](http://www.dana.com)  
[www2.dana.com/expert](http://www2.dana.com/expert)

©Dana Corporation, 2001